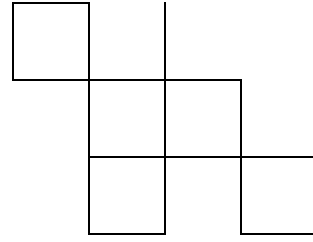
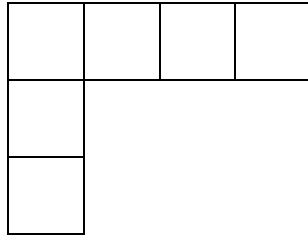
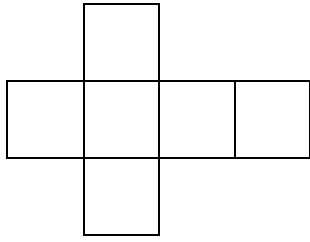
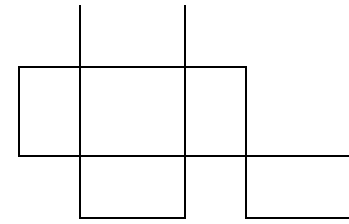
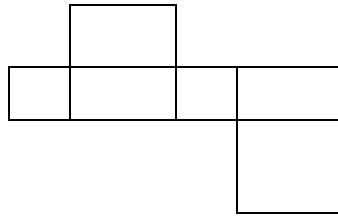
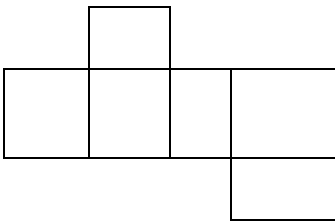
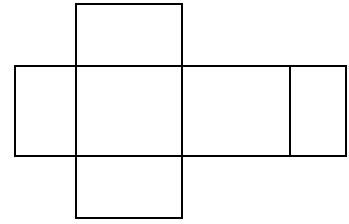
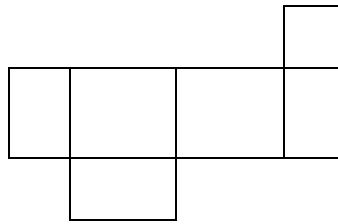
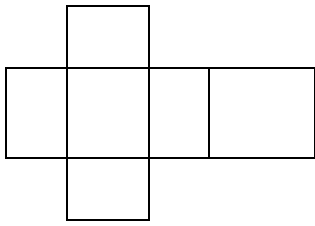


## TD MATHÉMATIQUES : PAVÉS

**1. Les figures suivantes sont-elles des patrons de cube ? Sinon, pourquoi ?**

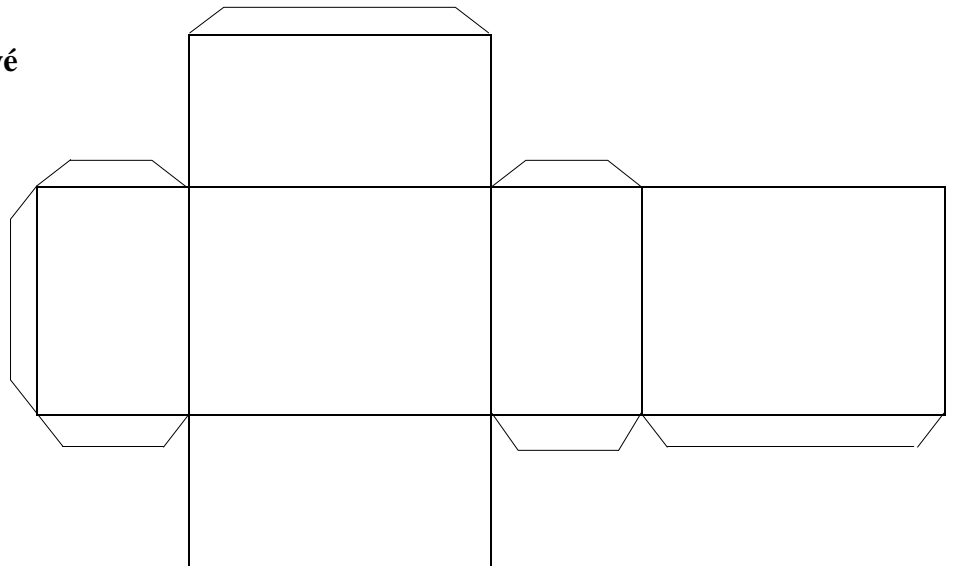


**2. Les figures suivantes sont-elles des patrons de pavé ? Sinon, pourquoi ?**



**3. Découper le patron de pavé ci-contre**

Plie bien sur chaque arête  
puis forme le pavé et colle  
les pattes.



**4. Construis le patron du pavé dont voici la perspective ci dessous :**

Longueur =  $AD = 6$  cm

Largeur =  $AB = 2$  cm

Hauteur =  $AF = 4$  cm

N'oublie pas les pattes de collage (si tu veux le coller)

